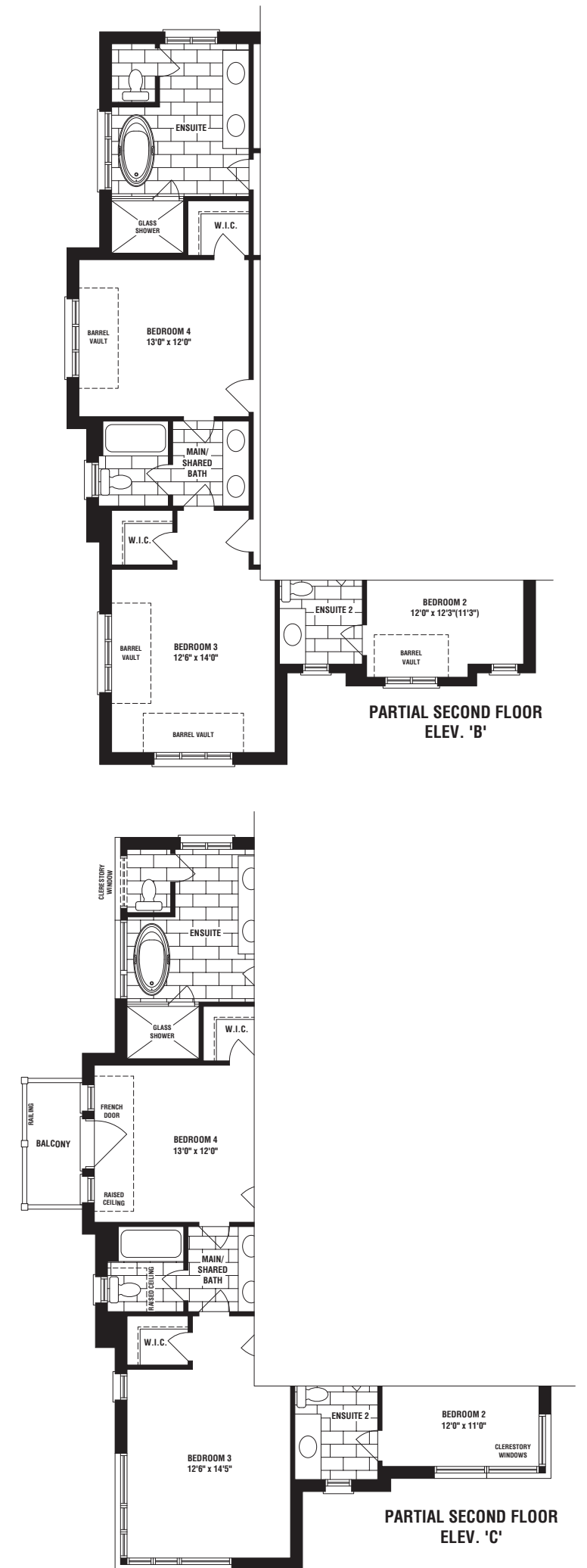
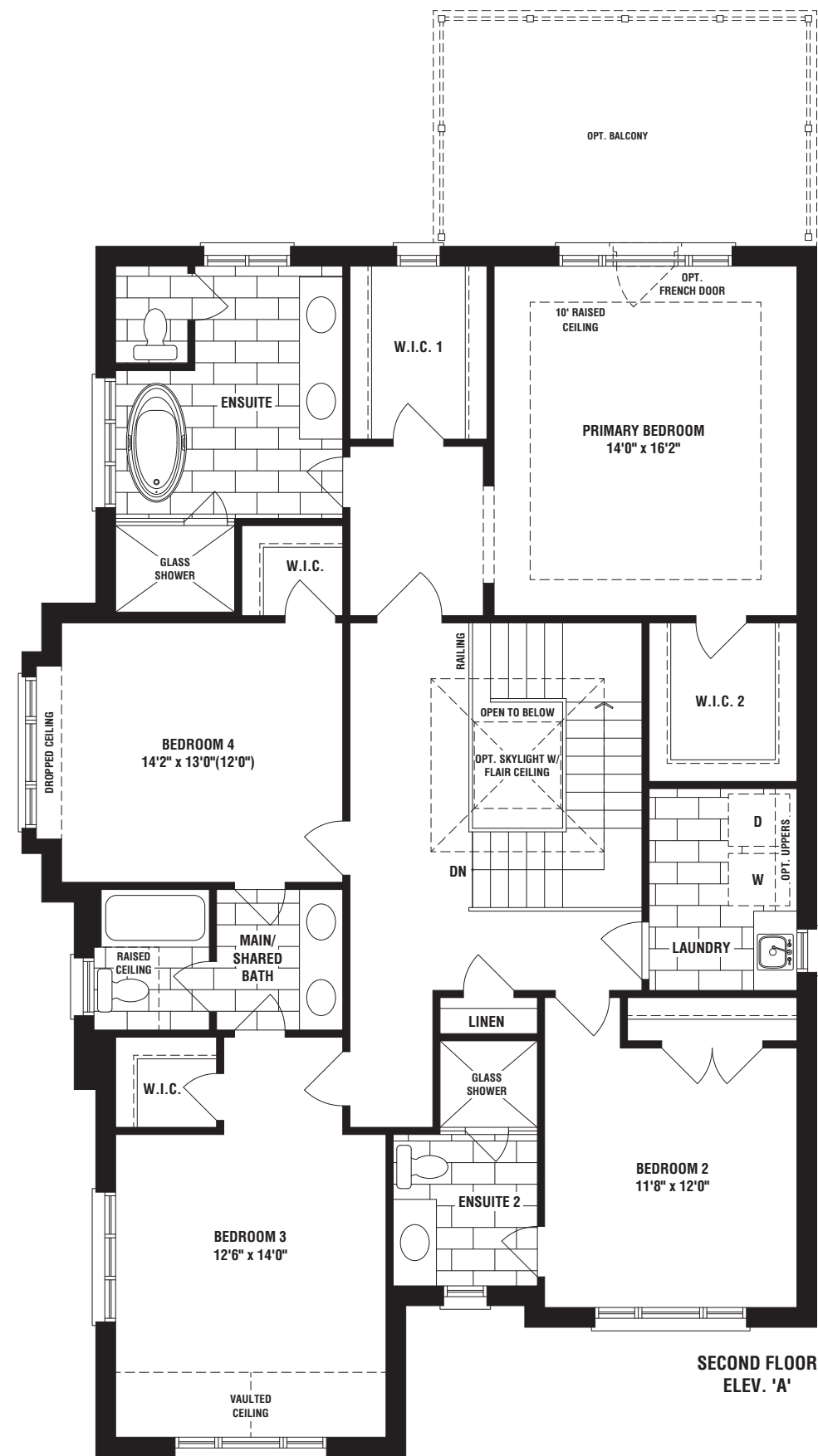
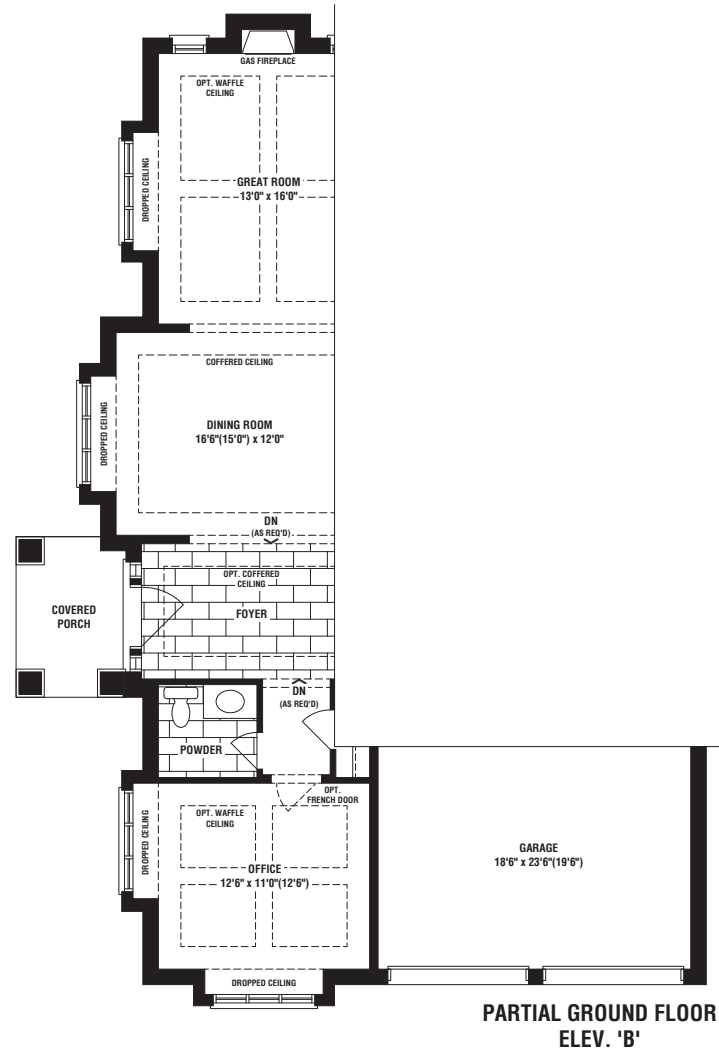


# Warwick Corner

4 BEDROOMS & 3.5 BATHROOMS  
ELEV. A: 3313 SQ FT | ELEV. B: 3543 SQ FT | ELEV. C: 3495 SQ FT  
SQ FT INCLUDES 79 SQ FT FOR FINISHED BASEMENT FOYER  
(ADDITIONAL 728 SQ FT (ELEV. A & C) FOR OPTIONAL FINISHED BASEMENT | 741 SQ FT (ELEV. B) FOR OPTIONAL FINISHED BASEMENT)

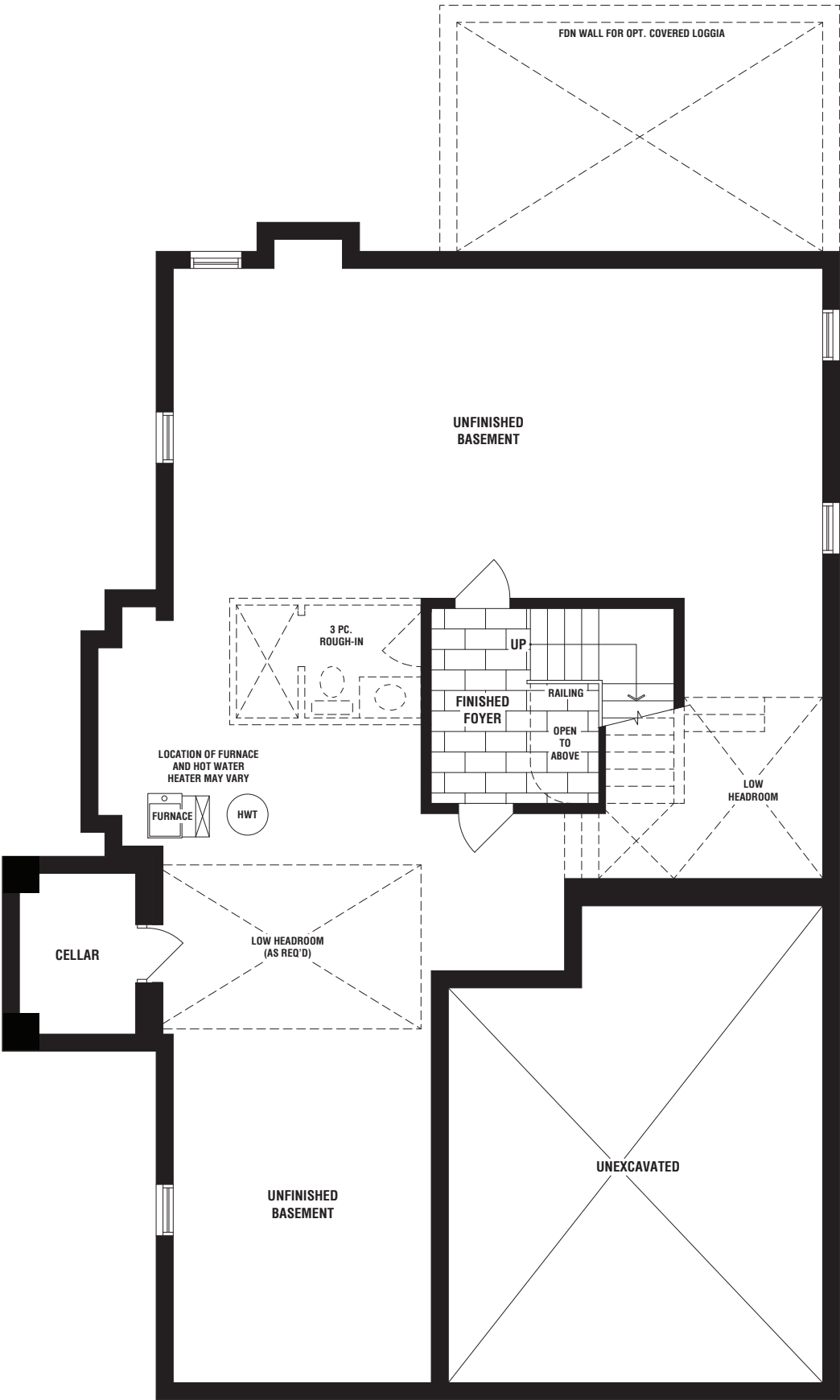




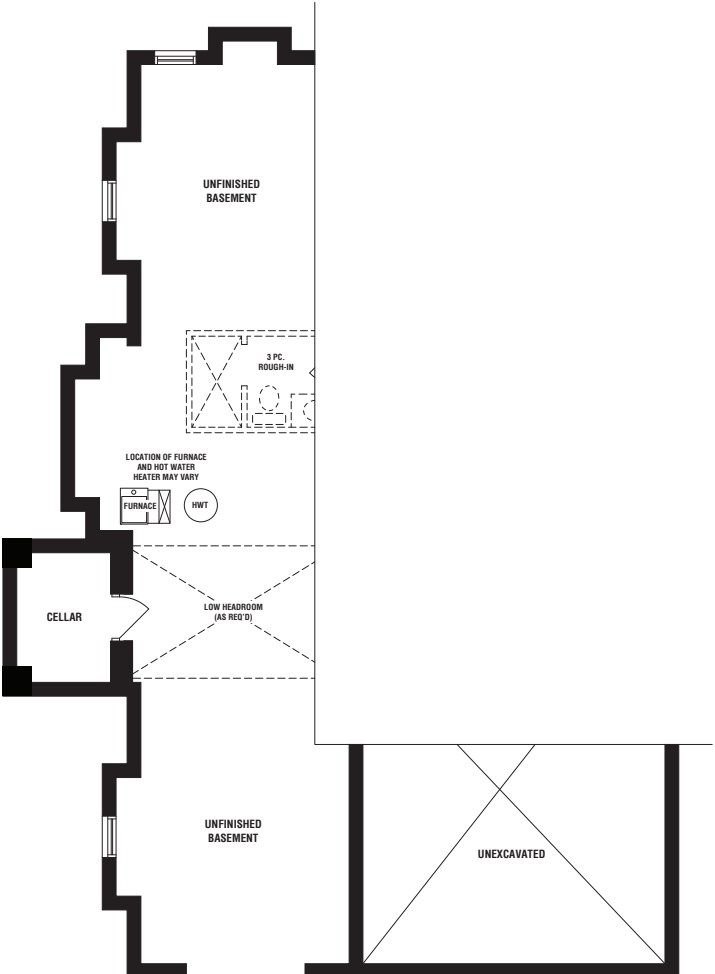


All illustrations are artist's concept. Specifications and conditions are subject to change without notice. Actual usable floor space may vary from the stated floor area. Tile patterns may vary. Window size and location may vary. Location of furnace, hot water tank and support posts and beams are determined by the HVAC designer and architect respectively. Number of exterior steps may vary depending on the lot and the grading of individual home sites. Please see Sales for details. Materials, suppliers and upgrades may vary by builder. E.&O.E. 4203C

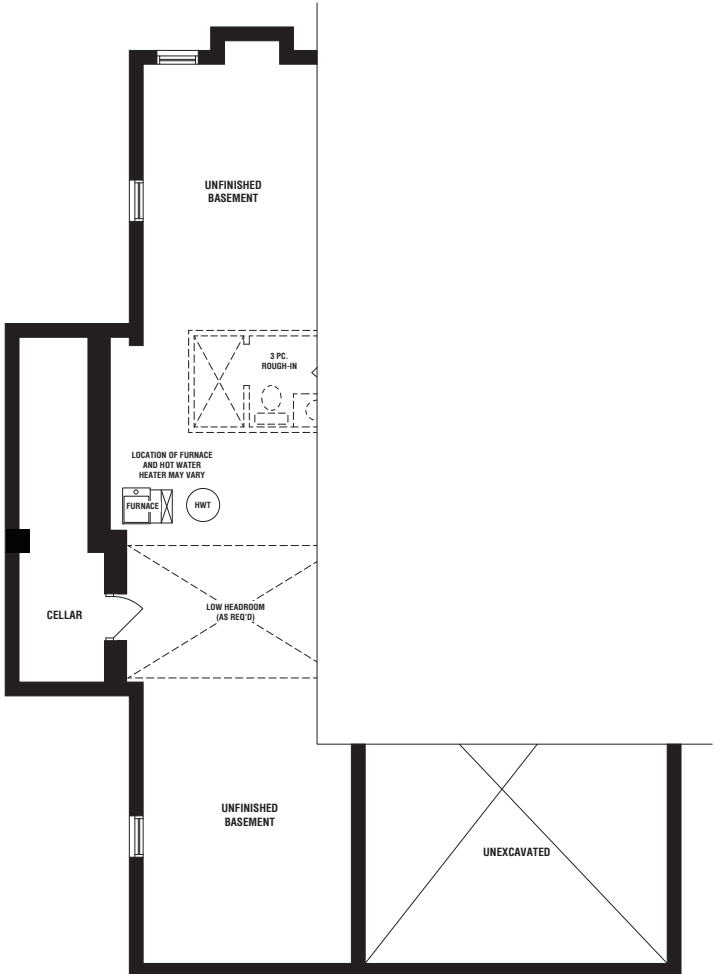
ELEV. A: 3313 SQ FT | ELEV. B: 3543 SQ FT | ELEV. C: 3495 SQ FT  
SQ FT INCLUDES 79 SQ FT FOR FINISHED BASEMENT FOYER (ADDITIONAL 728 SQ FT (ELEV. A & C)  
FOR OPTIONAL FINISHED BASEMENT | 741 SQ FT (ELEV. B) FOR OPTIONAL FINISHED BASEMENT)



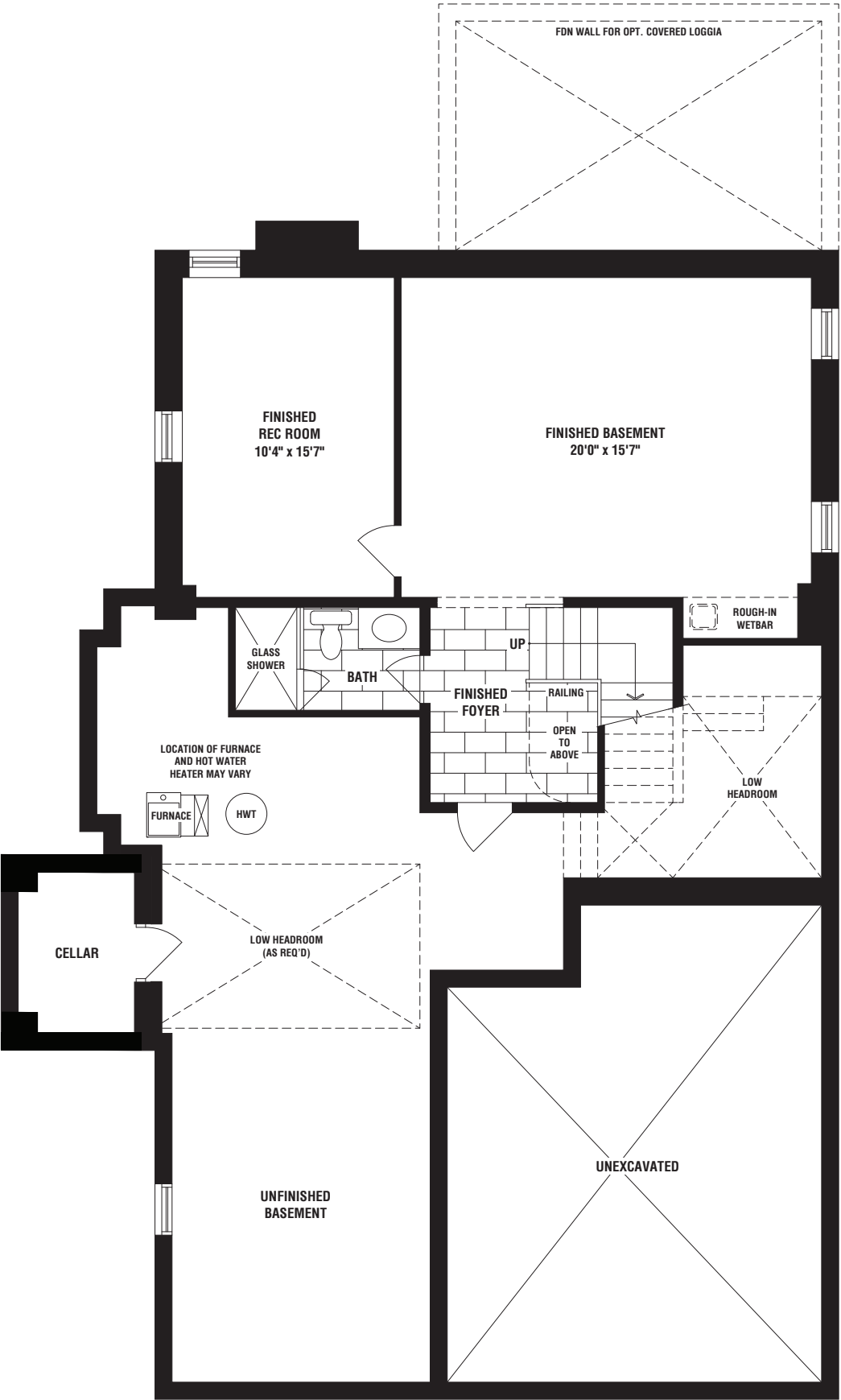
BASEMENT PLAN  
ELEV. 'A'



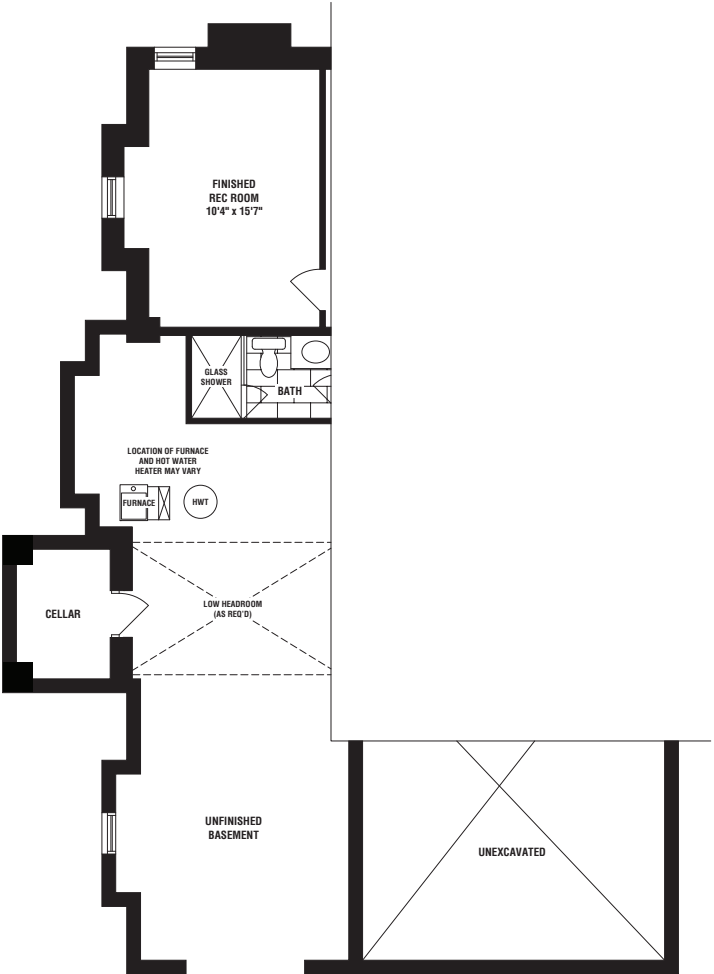
PARTIAL BASEMENT PLAN  
ELEV. 'B'



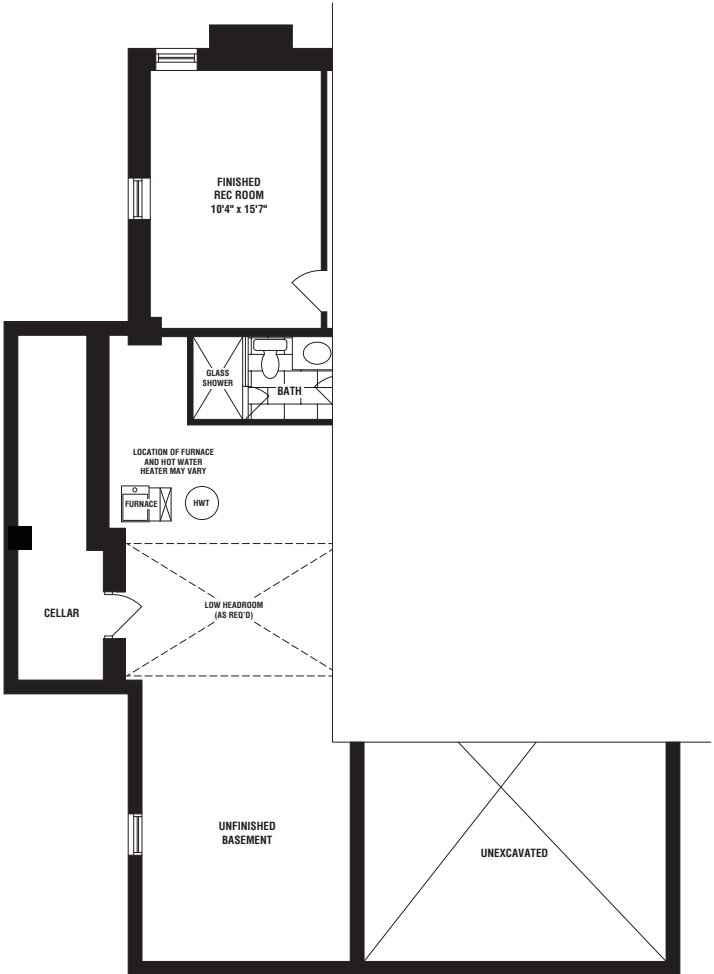
PARTIAL BASEMENT PLAN  
ELEV. 'C'



OPT. FINISHED BASEMENT PLAN  
ELEV. 'A'



PARTIAL OPT. FINISHED BASEMENT PLAN  
ELEV. 'B'



PARTIAL OPT. FINISHED BASEMENT PLAN  
ELEV. 'C'

All illustrations are artist's concept. Specifications and conditions are subject to change without notice. Actual usable floor space may vary from the stated floor area. Tile patterns may vary. Window size and location may vary. Location of furnace, hot water tank and support posts and beams are determined by the HVAC designer and architect respectively. Number of exterior steps may vary depending on the lot and the grading of individual home sites. Please see Sales for details. Materials, suppliers and upgrades may vary by builder. E.&O.E. 4203C