

Cardiff Corner

4 BEDROOMS & 3.5 BATHROOMS

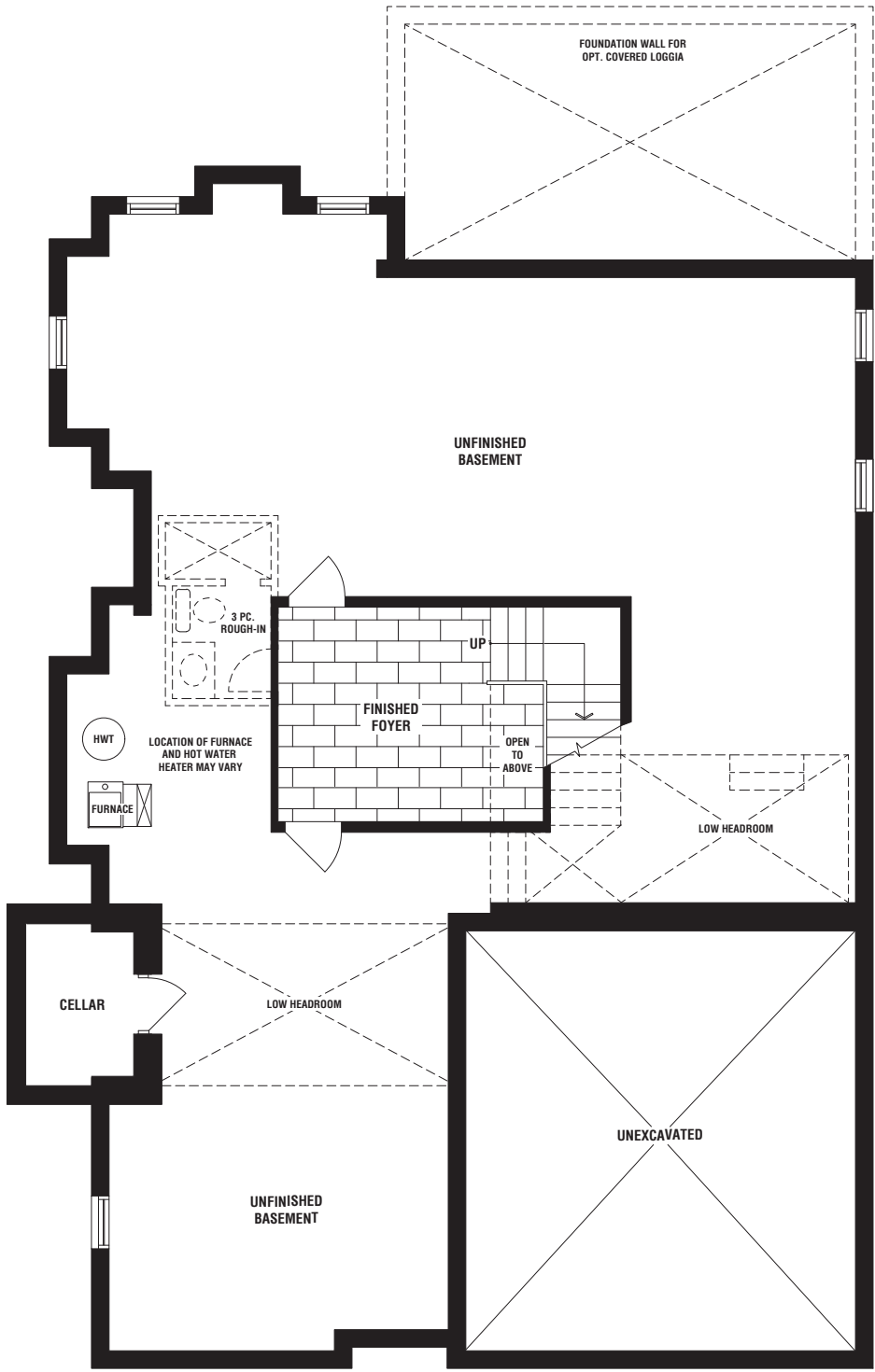
ELEV. A: 3568 SQ FT | ELEV. B: 3598 SQ FT | ELEV. C: 3547 SQ FT

SQ FT INCLUDES 137 SQ FT FOR FINISHED BASEMENT FOYER

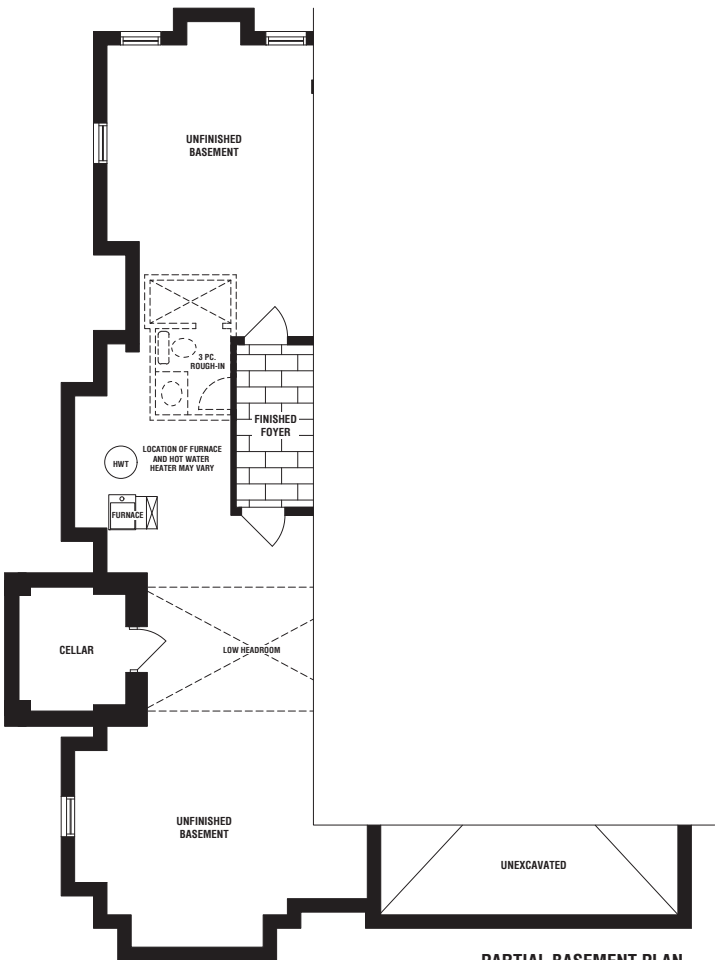
(ADDITIONAL 858 SQ FT (ELEV. A) | 839 SQ FT (ELEV. B & C) FOR OPTIONAL FINISHED BASEMENT)



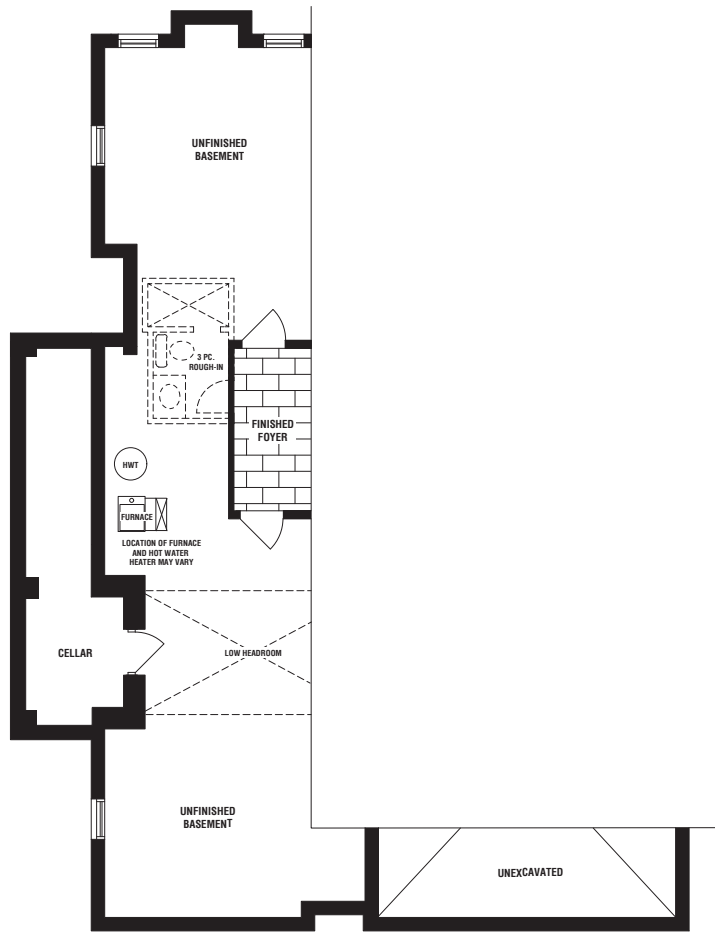




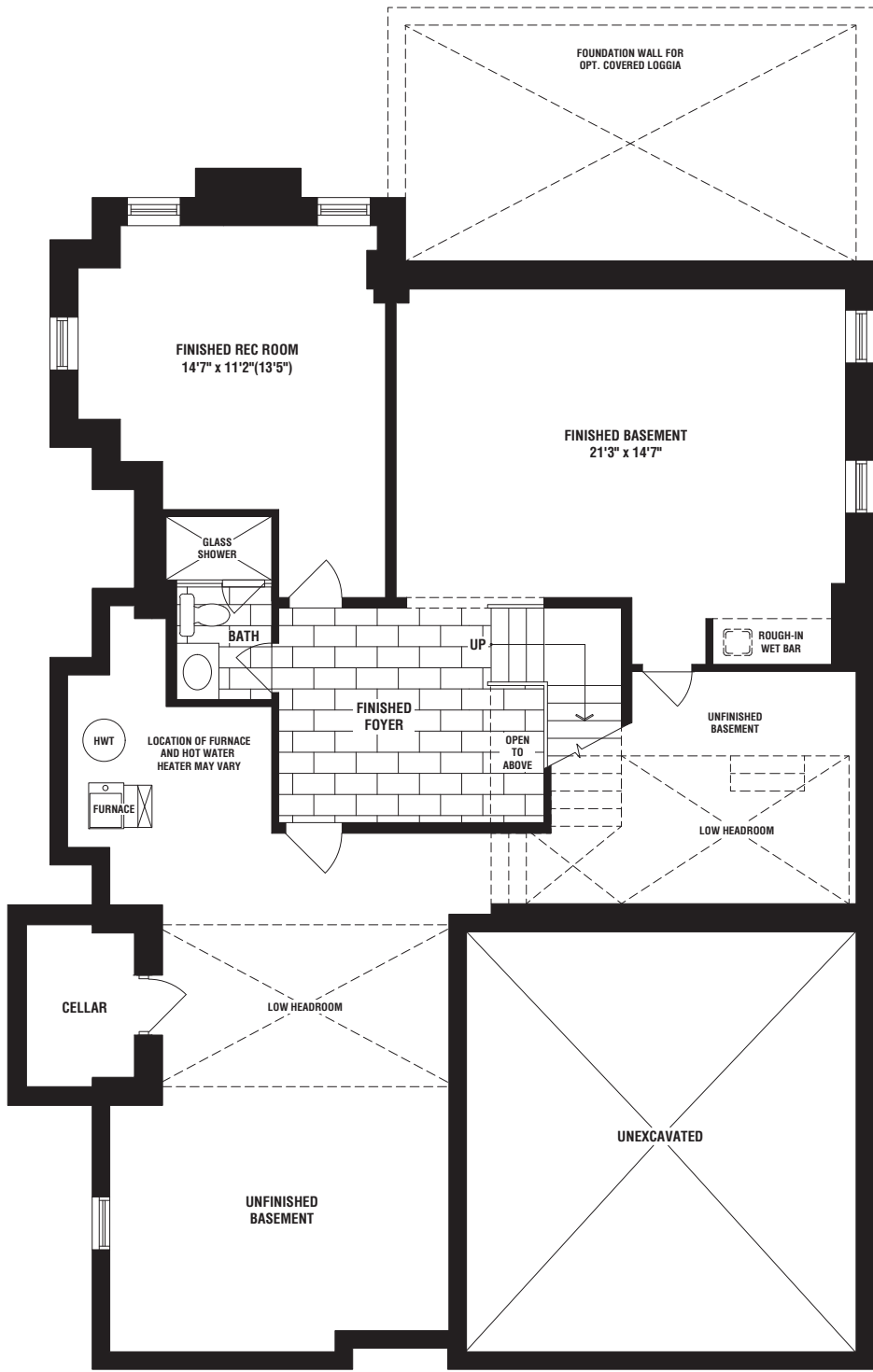
BASEMENT PLAN
ELEV. 'A'



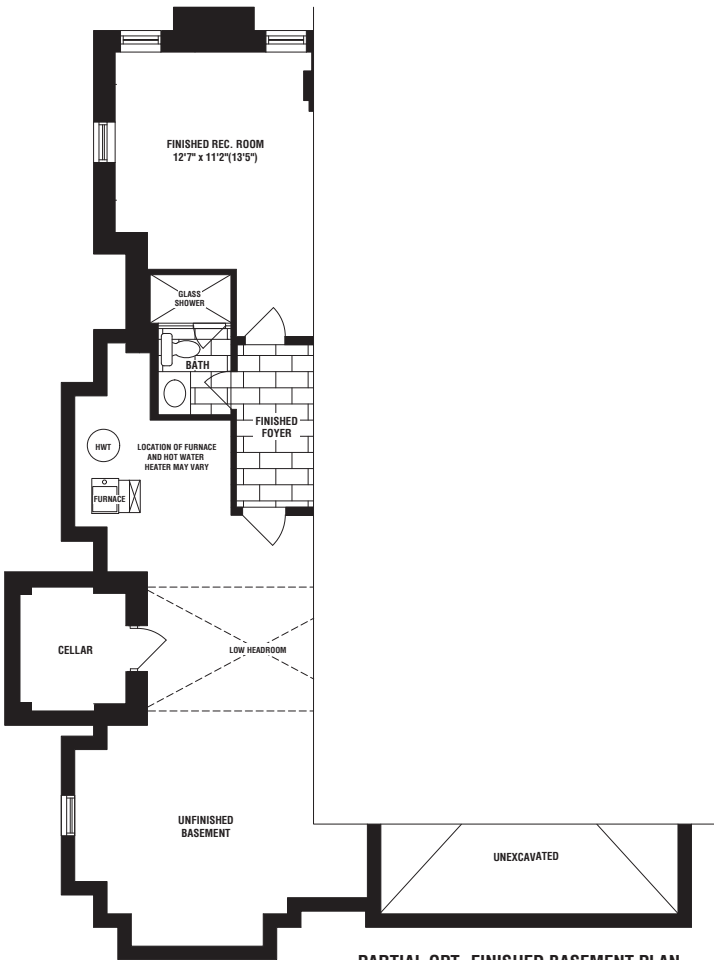
PARTIAL BASEMENT PLAN
ELEV. 'B'



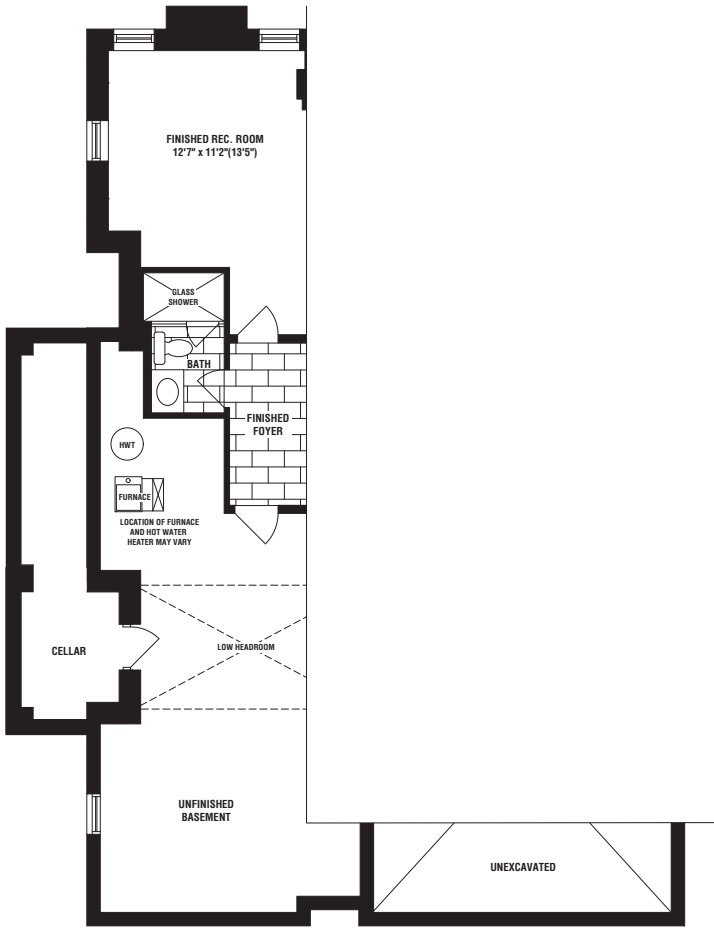
PARTIAL BASEMENT PLAN
ELEV. 'C'



OPT. FINISHED BASEMENT PLAN
ELEV. 'A'



PARTIAL OPT. FINISHED BASEMENT PLAN
ELEV. 'B'



PARTIAL OPT. FINISHED BASEMENT PLAN
ELEV. 'C'